

# WINDOW JAMB

VERSACORE INSULATED  
WALL PANEL  
BY FABCON

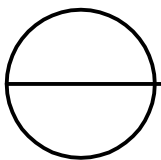
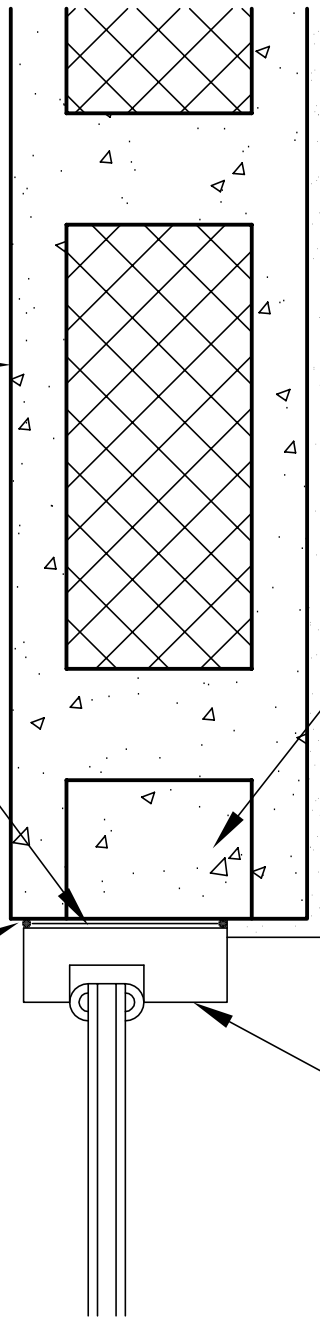
1/2" GYP. BD.  
GLUED TO  
SURFACE

SHIMMING AS  
REQUIRED

CORES FILLED SOLID  
W/ CONC IN PLANT

WATER TIGHT  
SEALANT INSIDE  
& OUT

HOLLOW METAL  
FRAME



DETAIL

1 1/2" = 1'-0"